

CARIBBEAN METEOROLOGICAL ORGANIZATION



PHASES OF WEATHER RADAR INSTALLATION

Doppler Weather Radars in Barbados, Belize, Guyana and Trinidad & Tobago

Including Local and Regional Data Samples

PHASES OF WEATHER RADAR INSTALLATION



Top row: Antenna assembly & installation



Bottom row: Antenna under radome assembly



Top row: Radar electronics, transmitter & control systems



Bottom row: Left: Microwave transmission of data to Meteorological office

Right: Complete installation

NOTE: These phases of installation and components are the same for all four radar sites



Trinidad



Barbados



Belize



Guyana

Completed CMO Doppler Weather Radar structures in Trinidad, Barbados, Belize and Guyana
[courtesy Caribbean Meteorological Organization (CMO), 2009]

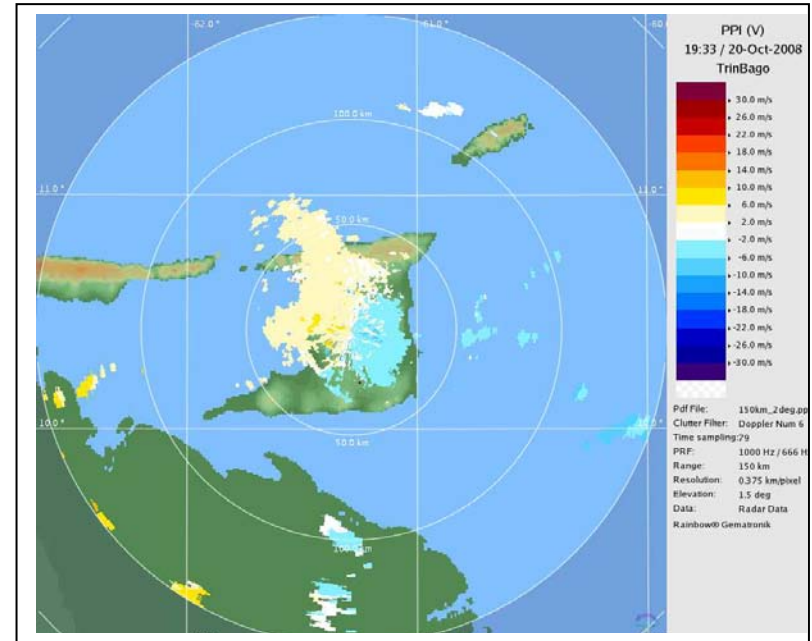
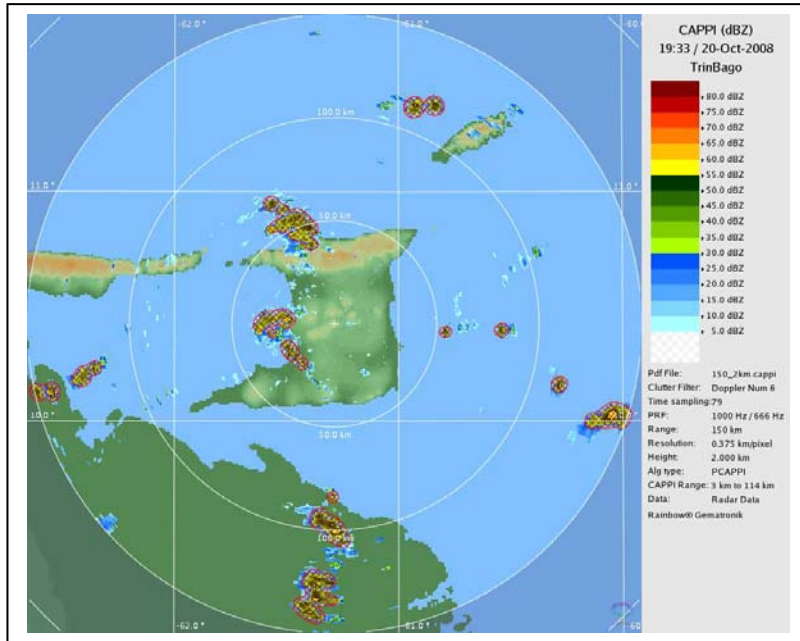
SAMPLES OF RADAR DATA OUTPUT AT METEOROLOGICAL OFFICES

Figure 1:

Samples of radar images from Trinidad 20.10.08

Top:

150 km CAPPI & Velocity



Bottom:

200 km & 400 km PPI

(Max tops/ severe weather in hatched areas)

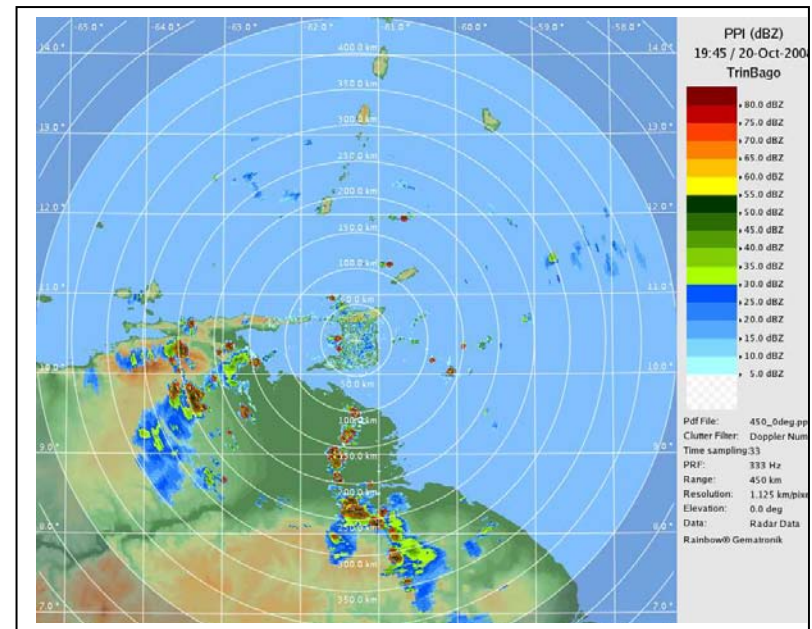
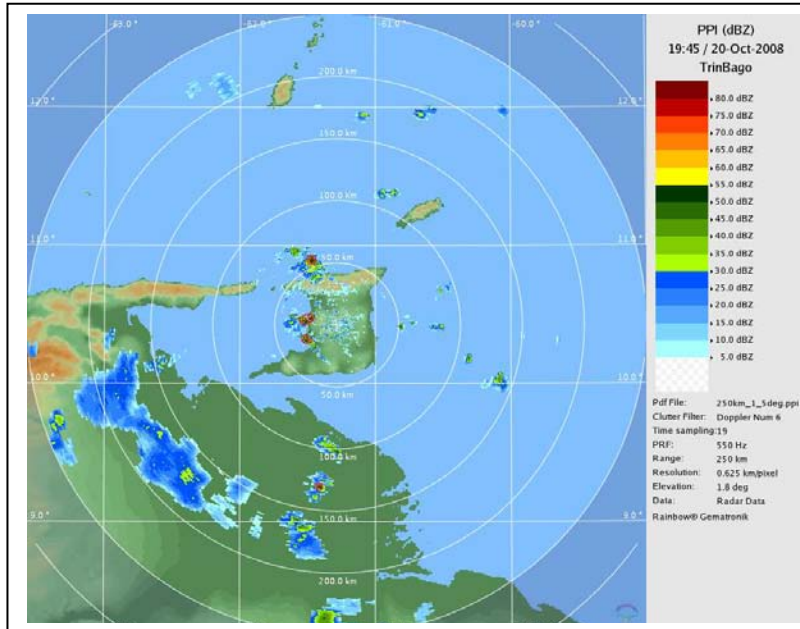
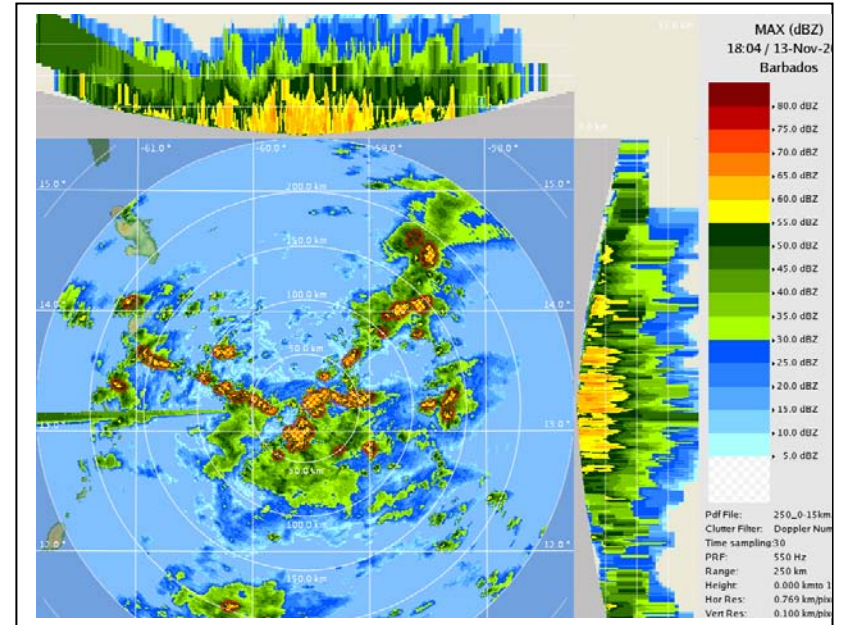
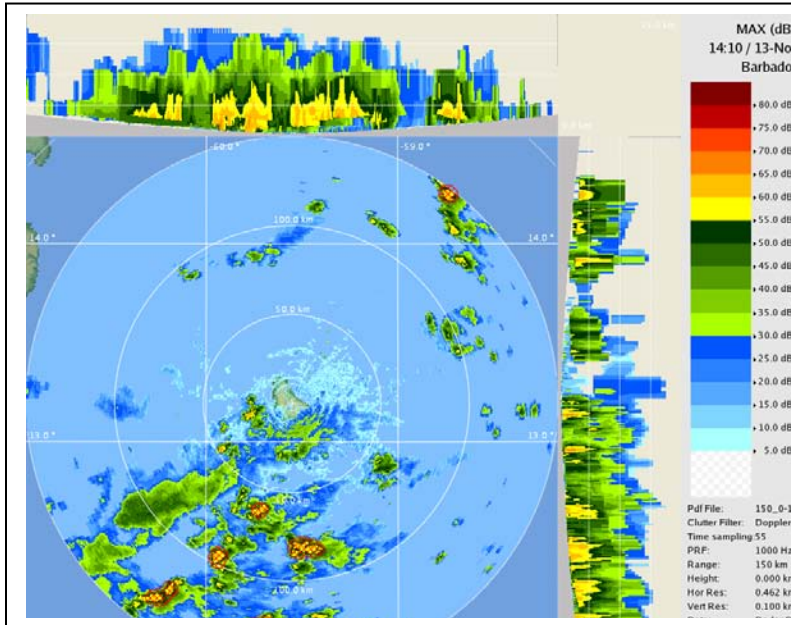


Figure 2:

Samples of radar images from Barbados 13.11.08

Max Tops at 150 km and 250 km ranges with cross-sections



(Max tops/
severe
weather in
hatched
areas)

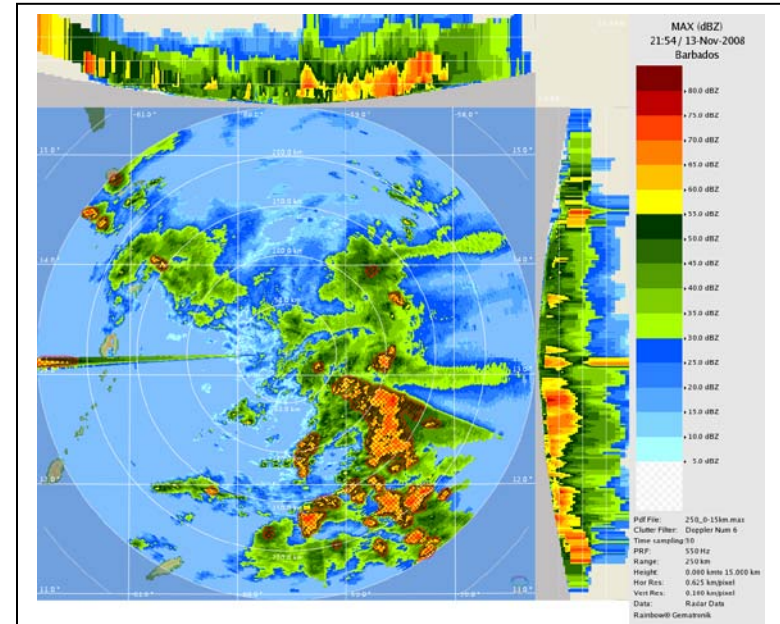
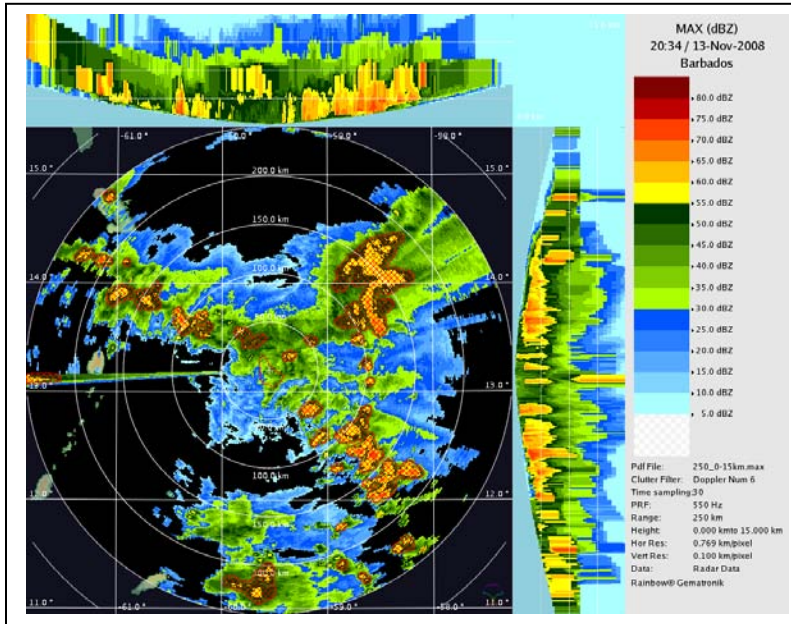
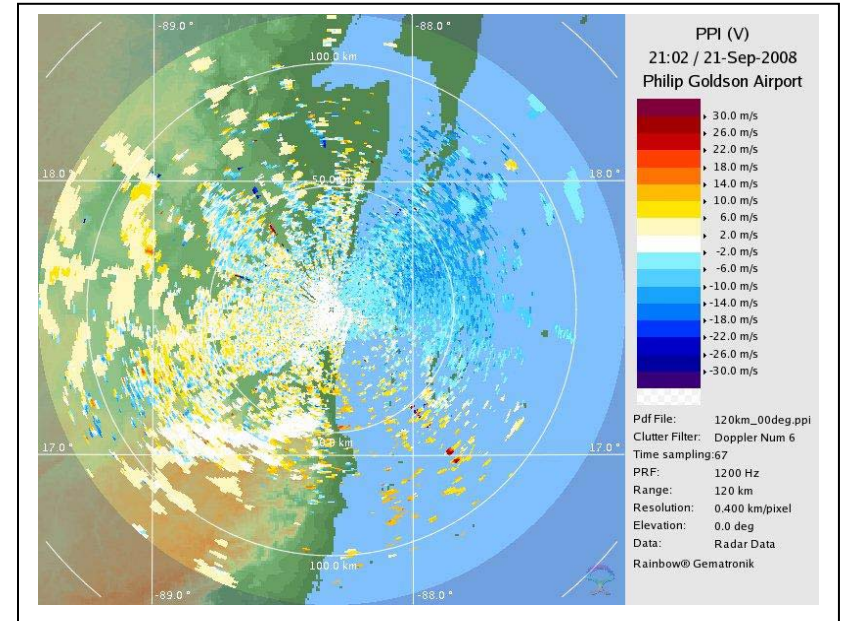
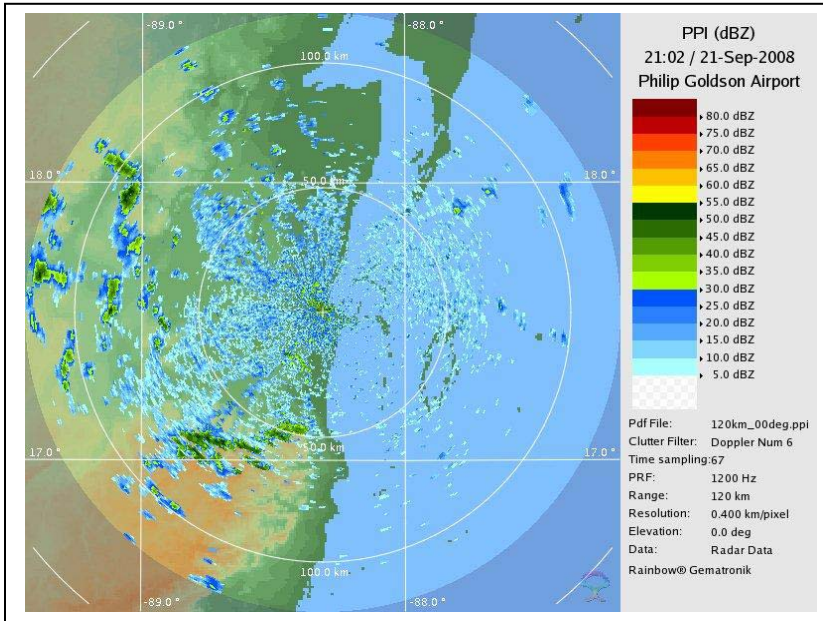


Figure 3:

Samples of radar images from Belize 21.9.08

Top:

120 km PPI & Velocity



Bottom:

250 km & 400 km PPI

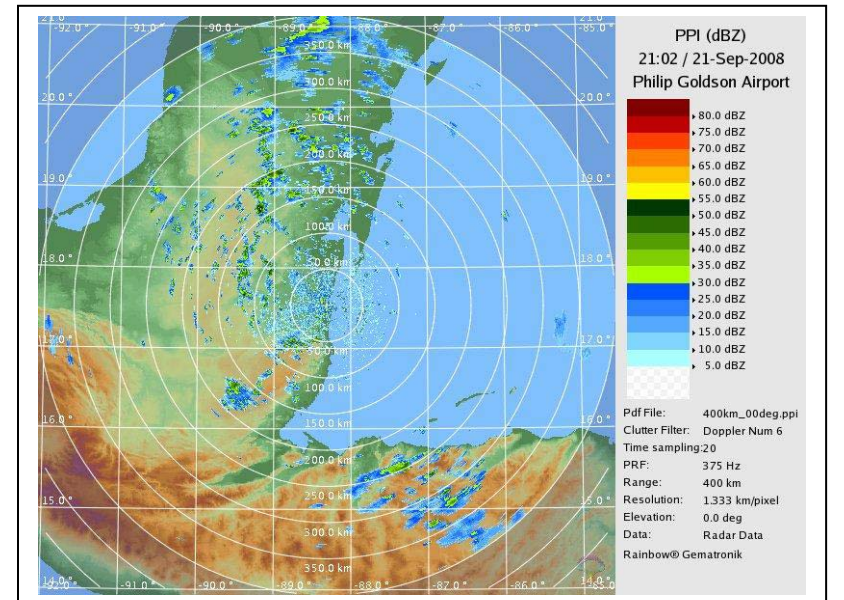
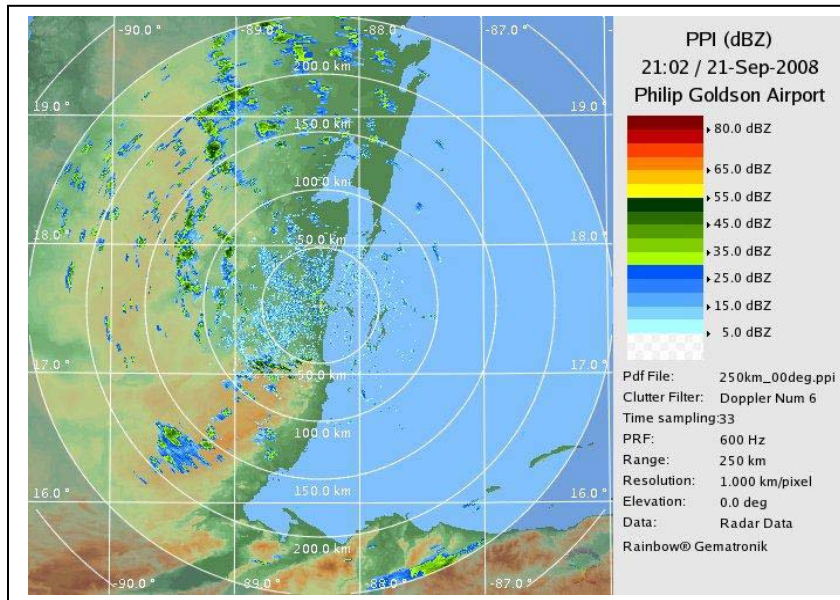


Figure 4:

Samples of radar images from Guyana 22.7.09

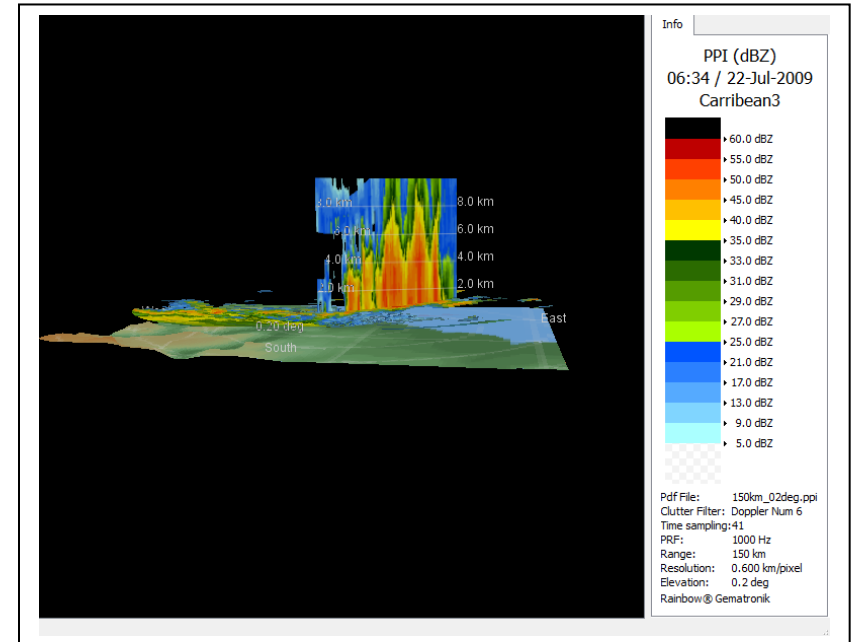
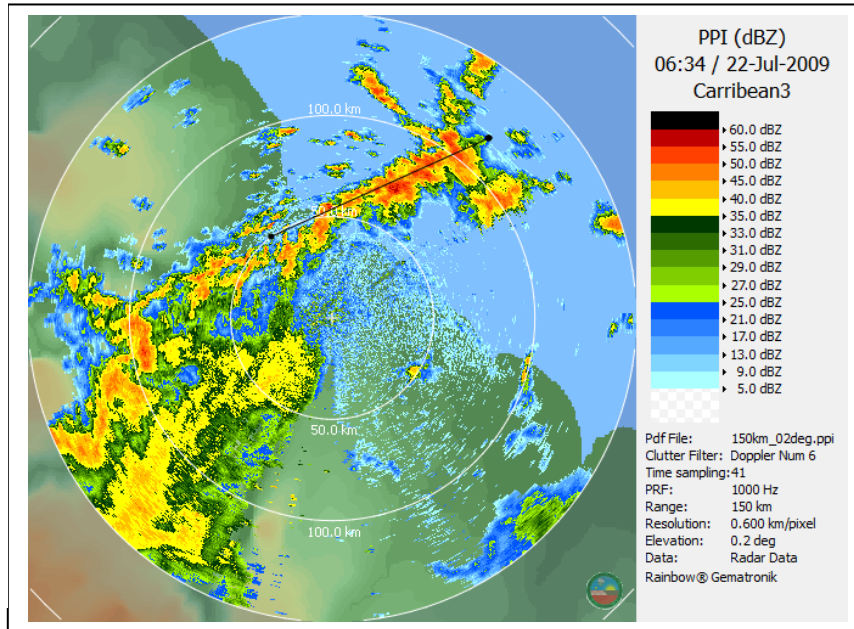
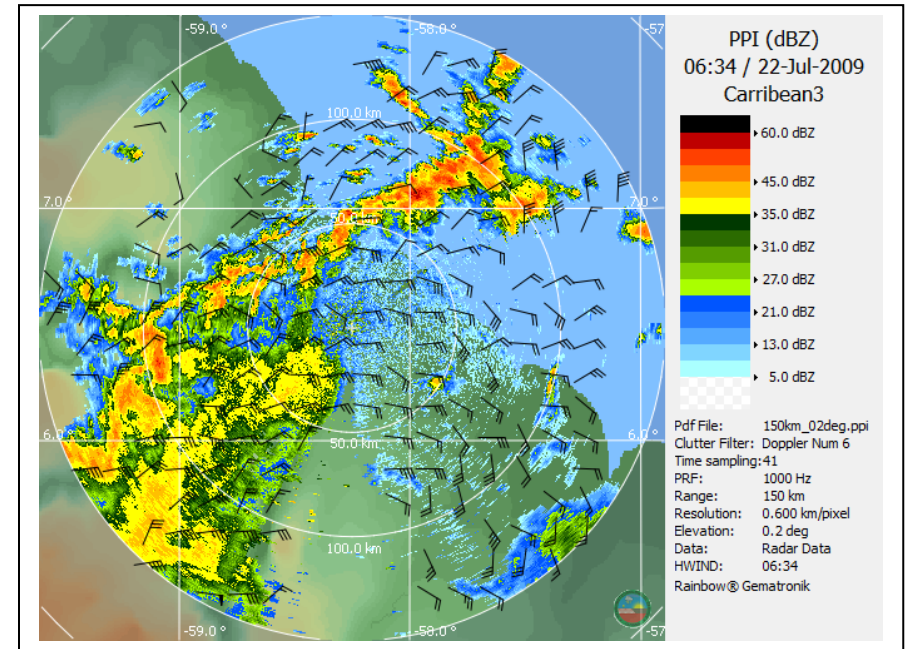
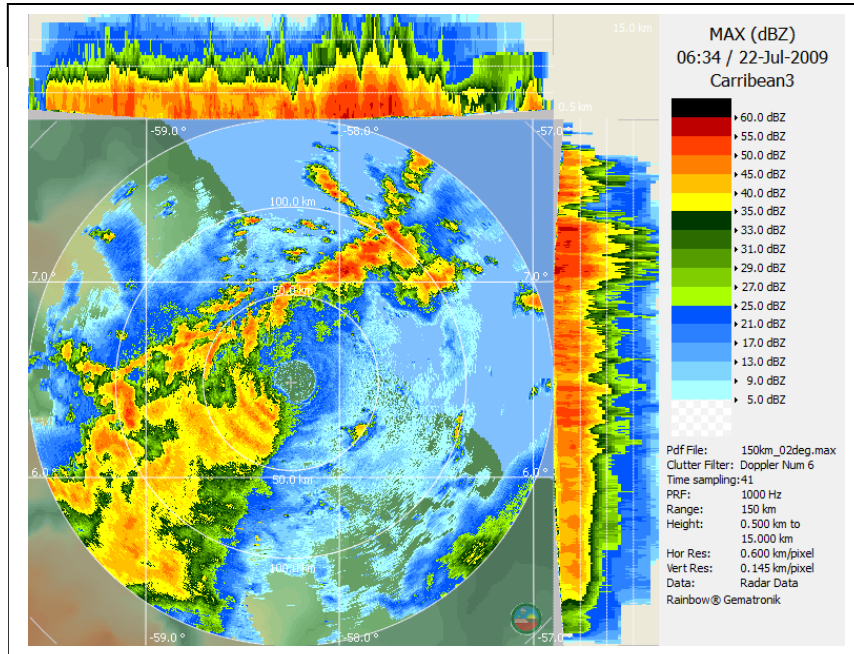
Top left: Max Tops at 150 km range

Top right: 150km PPI & Doppler winds

Bottom

Left: 150 km PPI with selected slice

Right: Vertical look at selected slice



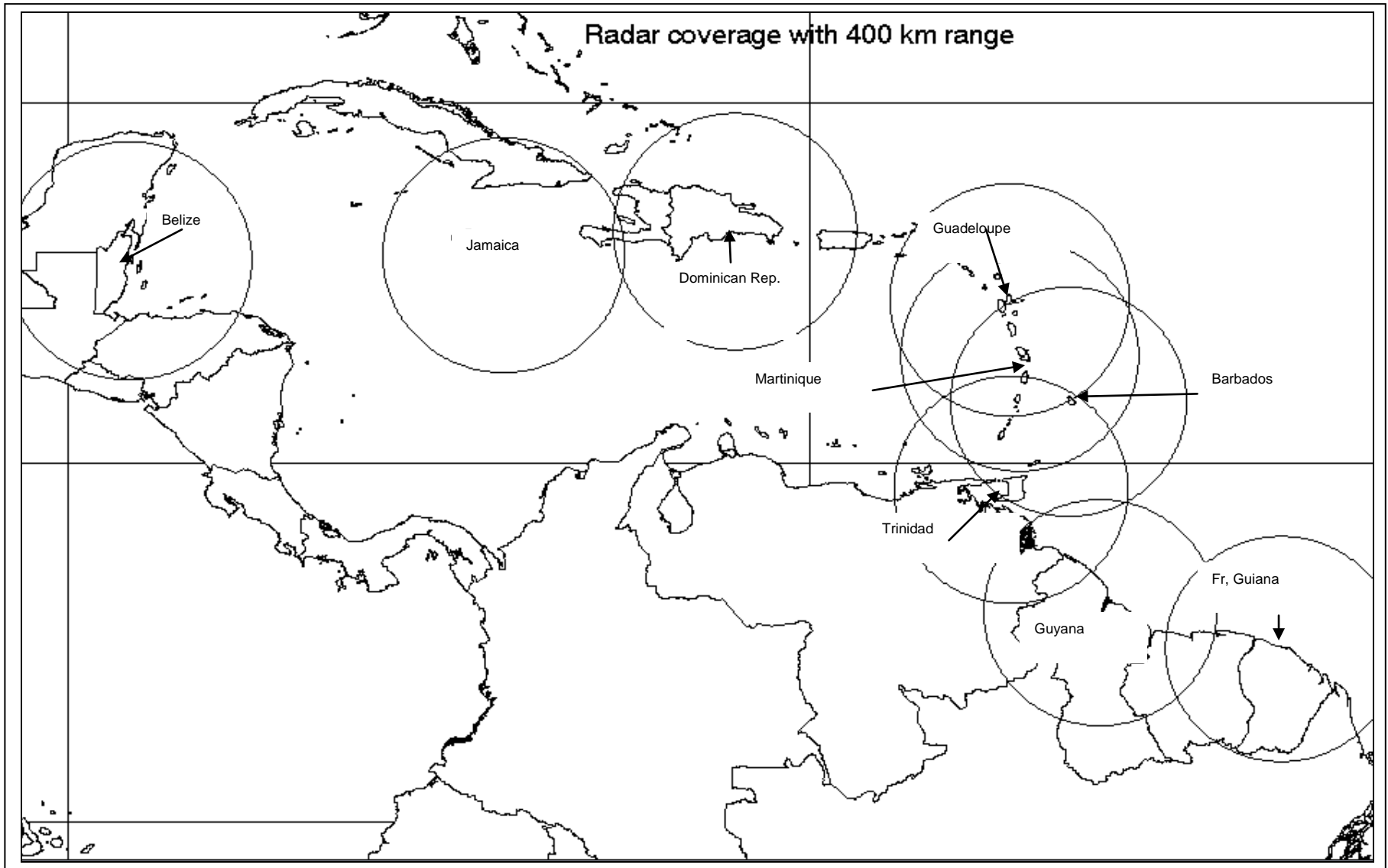


Figure 5 shows the Regional Radar Composite coverage at 400km range



Figure 6: Early stages of the Regional Radar Composite with radars in Guadeloupe, Martinique, Trinidad and French Guiana, July 2009